

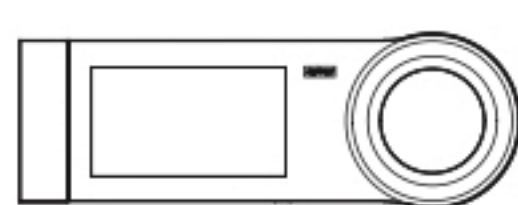
Quick Start Controller Install Guide

Last Updated: 2 years ago in [General Information, Manuals](#)

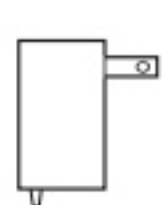
Installation & Set Up of the skydrop WiFi sprinkler controller:

1)

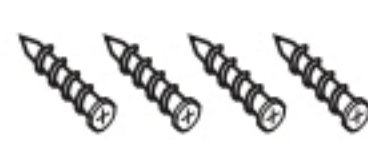
Remove all components from skydrop package: Controller, Wall Plate, Power Supply, Screws and Instruction Manual.



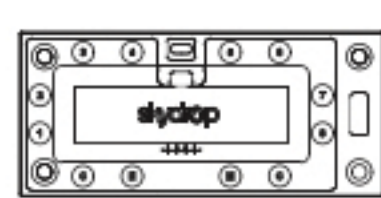
Controller



Power Supply



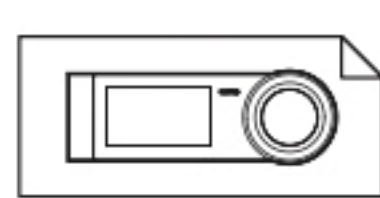
Wall Screws



Wall Plate



Wire Labels



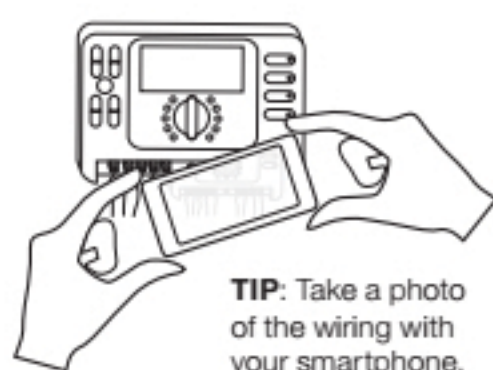
Installation Guide

2)

Locate existing Sprinkler Box and unplug the power supply.

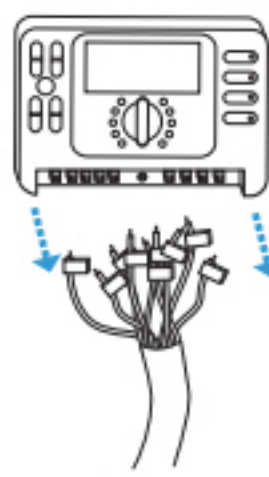
3)

Remove cover to expose valve wire connections. Take a picture on your phone or smart device (for reference later), or label wires according to their zone configuration.



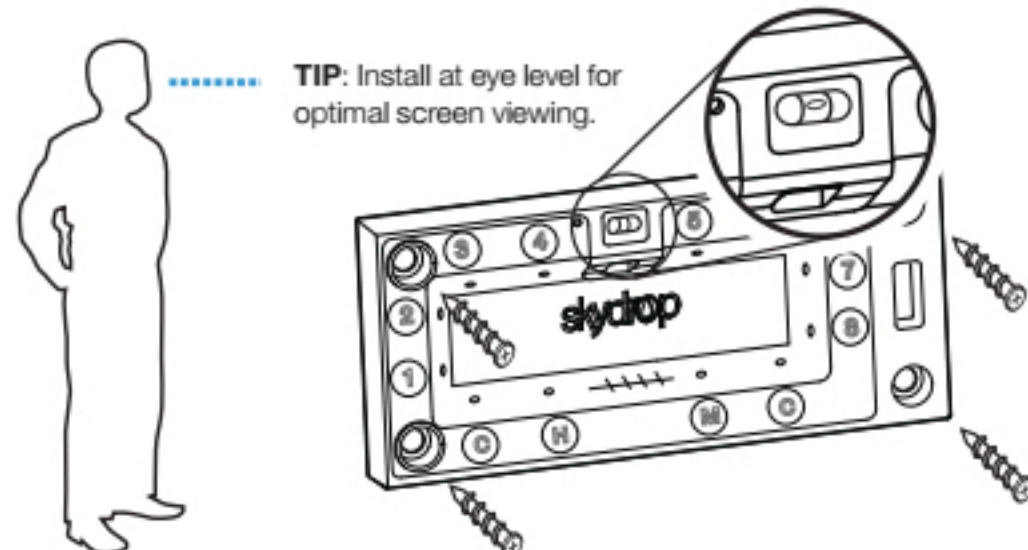
4)

Disconnect existing valve wires, and remove old sprinkler controller from the wall.



5)

Locate the skydrop wall plate and 4 installation screws. Determine best place for device install. Place wall plate in desired location, and reference the bubble level to ensure it is aligned accurately. Use the included screws, to fasten wall plate in place.

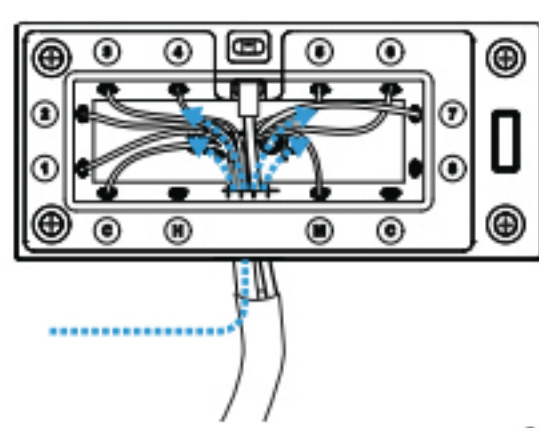


6)

Feed power supply plug-in through opening at the bottom of the wall plate, and plug into wall plate connection (Do not plug power supply into outlet yet).

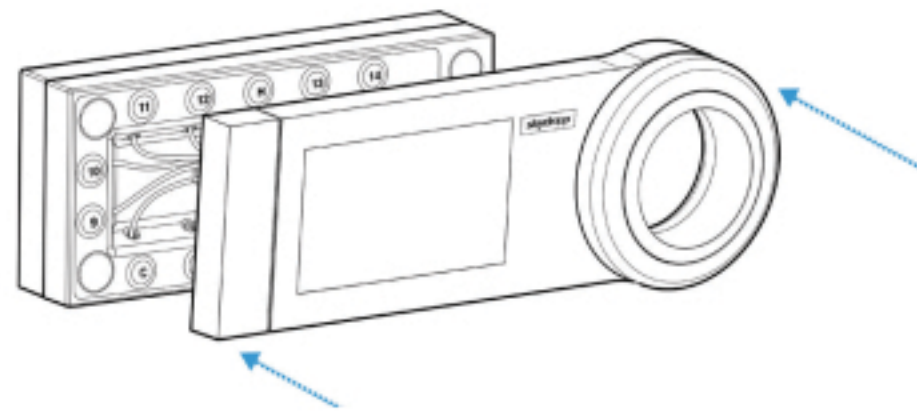
7)

Feed valve wires through opening along bottom of wall plate and insert into correct zone number. Numbers 1-8 correspond to sprinkler zones. C is for Common, M is for Master Valve.



8)

Snap the skydrop controller face onto the wall plate.



9)

Plug power supply into an outlet (24V). Skydrop logo will illuminate. Wait until the skydrop system has fully started (typically 60-90 seconds).



10)

Skydrop will initiate a setup tutorial and guide you through setting up your skydrop controller system. Enter location Zip Code.

11)

Follow controller instructions for WiFi connection setup.

12)

*If for any reason it becomes necessary to remove/un-install the controller: you must first power down. (1) Using the 'Power' button located along the bottom of the controller, (2) hold until device shuts down, then (3) remove controller or disconnect power supply.

If you need assistance during setup, please contact Skydrop Support. you can email us: support@skydrop.com or call: 1-844-SKYDROP [1-844-759-3767]